

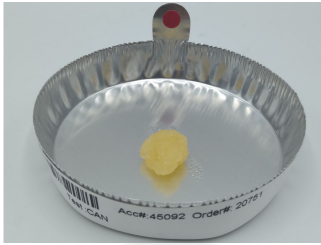
## Smoky Mountain CBD

409 us highway 64  
Etowah, TN 37361  
Ryan@smokymountaincbd.com  
865-310-6466

Sample: 01-29-2024-45092W4733

Sample Received: 01/29/2024;  
Report Created: 01/30/2024; Expires: 01/29/2025

Crumble  
Concentrate & Extracts crumble



**77.625 %**

Total THC

**<LOQ %**

Δ-9 THC

**89.411 %**

Total Cannabinoids

**ND %**

Total CBD

## Cannabinoids

(Testing Method: HPLC, CON-P-3000)  
Date Tested: 01/29/2024

Complete

Analyte	LOD	LOQ	Mass	Mass	
	%	%	%	mg/g	
Δ-8-Tetrahydrocannabinol (Δ-8 THC)	0.1031	0.1546	ND	ND	
Δ-9-Tetrahydrocannabinol (Δ-9 THC)	0.1031	0.1546	<LOQ	<LOQ	
Δ-9-Tetrahydrocannabinolic Acid (THCA-A)	0.1031	0.1546	<b>88.512</b>	<b>885.124</b>	
Δ-9-Tetrahydrocannabinophorol (Δ-9-THCP)	0.1031	0.1546	ND	ND	
Δ-9-Tetrahydrocannabivarin (Δ-9-THCV)	0.1031	0.1546	ND	ND	
Δ-9-Tetrahydrocannabivarinic Acid (Δ-9-THCVA)	0.1031	0.1546	<b>0.693</b>	<b>6.928</b>	
R-Δ-10-Tetrahydrocannabinol (R-Δ-10-THC)	0.1031	0.1546	ND	ND	
S-Δ-10-Tetrahydrocannabinol (S-Δ-10-THC)	0.1031	0.1546	ND	ND	
9R-Hexahydrocannabinol (9R-HHC)	0.1031	0.1546	ND	ND	
9S-Hexahydrocannabinol (9S-HHC)	0.1031	0.1546	ND	ND	
Tetrahydrocannabinol Acetate (THCO)	0.1031	0.1546	ND	ND	
Cannabidivarin (CBDV)	0.1031	0.1546	ND	ND	
Cannabidivarinic Acid (CBDVA)	0.1031	0.1546	ND	ND	
Cannabidiol (CBD)	0.1031	0.1546	ND	ND	
Cannabidiolic Acid (CBDA)	0.1031	0.1546	ND	ND	
Cannabigerol (CBG)	0.1031	0.1546	ND	ND	
Cannabigerolic Acid (CBGA)	0.1031	0.1546	ND	ND	
Cannabinol (CBN)	0.1031	0.1546	ND	ND	
Cannabinolic Acid (CBNA)	0.1031	0.1546	<b>0.206</b>	<b>2.062</b>	
Cannabichromene (CBC)	0.1031	0.1546	ND	ND	
Cannabichromenic Acid (CBCA)	0.1031	0.1546	ND	ND	
<b>Total</b>			<b>89.411</b>	<b>894.114</b>	

Total THC = THCa \* 0.877 + Δ9-THC; Total CBD = CBDa \* 0.877 + CBD; LOQ = Limit of Quantitation; ND = Not Detected.

Total THC Measurement of Uncertainty: ± 0.050%  
Total CBD Measurement of Uncertainty: ± 2.000%  
THCO potency analysis does not designate quantitative specificity of Δ-8-THCO and Δ-9-THCO isomers



New Bloom Labs  
6121 Heritage Park Drive, A500  
Chattanooga, TN 37416  
(844) 837-8223  
TN DEA#: RN0563975

*Natalie Siracusa*  
Natalie Siracusa  
Laboratory Director

Powered by reLIMS  
info@relims.com